

PERSONAL BANKING



The smarter way to bank.



# GOLD ACCOUNT PACKAGE

The perfect solution for your banking needs

## Choose the gold standard

Select our Gold Account Package for an all-round banking solution that lets you manage your current and savings accounts in multiple currencies including Khmer Riel, US Dollars, Thai Baht and Euros.



International-standard account package



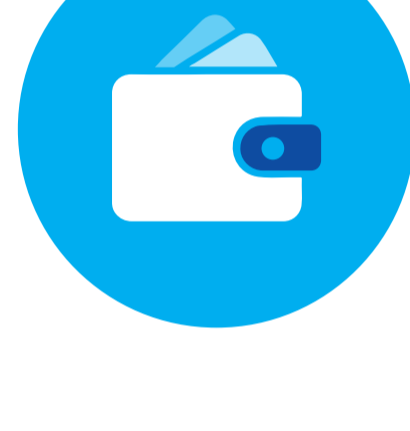
Increased spending and withdrawal limits



Interest-paying current and savings accounts



Local or foreign currency options



Single or joint accounts

### A great all-round account package

Start with a deposit of just USD 500 then maintain a USD 1,000 average balance to enjoy all your Gold Account's smarter banking benefits. You'll receive interest on any credit balance in your current and savings accounts and you'll have the option of an overdraft facility, subject to credit acceptance.

You can set up standing orders for regular payments or pay using the bill payments and KHQR functions in the BRED Connect app. It's also easy to send and receive international fund transfers. In fact, inward international transfers are completely free!

### International Visa card

You'll get a free international Visa debit card with higher limits for ATM withdrawals, the ability to make online and contactless payments and receive a cash advance.

### Branch, mobile and internet banking

With BRED Bank, you won't just enjoy a great personal banking experience at our branches, you'll also have the convenience of being able to access mobile and online banking from anywhere you like at any time.

## A smarter account for you

BRED Bank Cambodia provides the highest quality international banking experience. We're part of BRED Group, an extremely well-funded European banking cooperative, ensuring the highest possible standards of safety and security at all times.

Find out more today.

Call now

Visit website

Alternatively, speak to a Relationship Manager at any BRED Bank Cambodia branch.

Follow us for more on:

